



# JK Holdings Co.,Ltd.

## Corporate Profile







## Message from the President of JK Holdings

# JK Holdings will continue to move forward with strong steady steps.

Keiichiro Aoki  
President of JK Holding

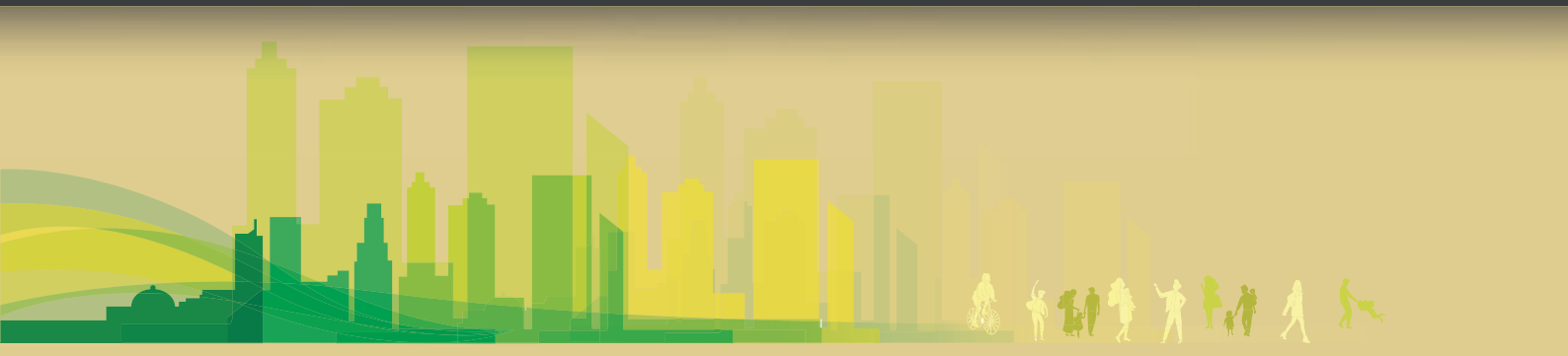
Under the corporate philosophy of "Creating a comfortable and rich home environment", the JK Holdings Group is engaged in the manufacture and sale of plywood, the processing and sale of lumber, and the wholesale of plywood, secondary plywood products, building materials, and housing equipment. In addition to simply selling products, we are also working to create a framework for coexistence and co-prosperity with our customers by providing them with management know-how.

We started our business in 1937 as a private store selling plywood, and in 2022, we will celebrate the 85th anniversary of our founding, with approximately 300 locations throughout Japan, 7 countries around the world, and approximately 60 group companies. We will continue to promote measures to expand and strengthen the group through mergers and acquisitions. Moreover, by strength-

ening our business management functions, we will strive to speed up management decision-making and improve management transparency, and at the same time form a corporate group in which each company can work together and demonstrate a high level of comprehensive strength based on the experience and knowledge gained since our founding.

Changes in working styles, the spread of telework due to the spread of the new coronavirus infection, and the increase in the amount of time spent at home have triggered a reassessment of the "living environment" and brought about changes in the needs for the living environment. The housing industry is expected to continue changing in the future. "Please look forward to the further development and evolution of the housing industry and the future growth of the JK Holdings Group."



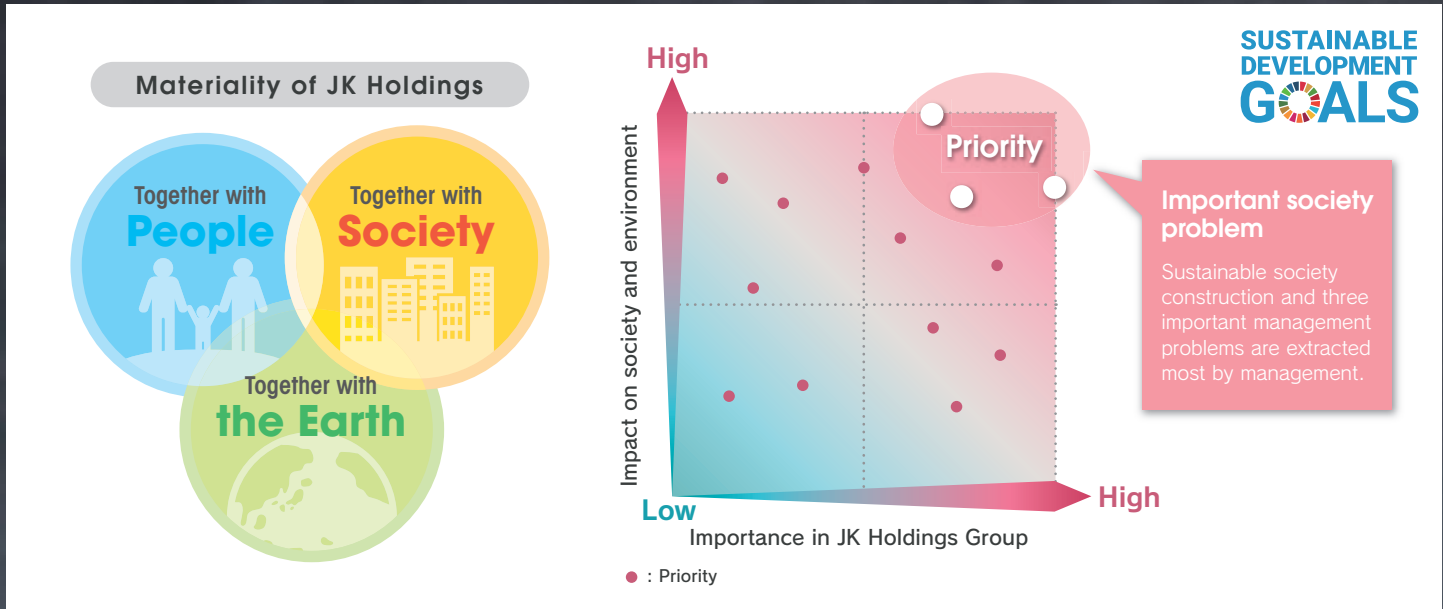


# JK Holdings Group's Approach to the SDGs

In April 2020, recognizing the building of a sustainable society and our own growth as long-term issues, the JK Holdings Group established the SDGs goals, culminating in our corporate philosophy of "Creating a comfortable and rich home environment". In order to respond to the external environment, including the uncertainty of the global economic situation, the declining birthrate and aging population, and the pollution of the global environment, we have formulated the three key issues of "Together with People," "Together with the Earth," and "Together with Society" and will implement basic strategies to resolve these issues. Our core subsidiary, Japan Kenzai, has selected earth friendly products that take legality into consideration, and launched the eco-brand "J-GREEN" in 2017. In addition, we purchase and sold plywood manufactured from lumber harvested from plantation forests in Indonesia. These forests are FSC® certified, which is rare for plantation forests, and have established a consistent cycle from

ensuring the sustainability of the forests to securing employment for the local residents who plant the trees. In 2019, Keytec signed a contract for forestation to celebrating the ceremony of the enthronement of His Majesty the Emperor of Japan, with the aim of promoting the recycling of resources, and conducted a reforestation project in 2020. We would like to continue to contribute to solving environmental problems through such sustainable initiatives. The SDGs are linked to many of our business issues, and our policy for solving these issues is to look beyond our mid-term management plan to 2030. Although there are still few companies in the housing industry that have set goals for the SDGs in the building materials industry, in order to achieve the goal of "leaving no one behind," industry-wide efforts are also required. By contributing to the SDGs, the JK Holdings Group will strive to have a positive impact on the industry as a whole.

## Matrix of three materiality extraction that JK Holdings works on



# For a Fulfilling Life Style

## Wholesaling business of general building materials (14Corporats)

### JAPAN KENZAI Co.,Ltd.

Establishment • February 1,2006  
 Capital • 100mYen  
 Sales • 263,490mYen  
 Employees • 1,101  
 Representative • Akinori Ogawa (President)  
 Head office • WOOD LAND TOWER, 1-7-22 Shinkiba, Koto-ku, Tokyo, Japan  
 Website • <https://www.jkenzai.co.jp/>

#### Business Fields

• Sales and construction of plywood, lumber, plywood secondary product (floor materials etc.), building materials (exterior wall materials), housing equipment (wall surface case goods, kitchen equipment, bathtub etc.) construction materials (cement and freshly-mixed concrete), Construction construct of wooden structure building (Non-Housing)



### TSUSHO Co.,Ltd.

Establishment • December 24,1962  
 Capital • 490mYen  
 Sales • 20,302mYen  
 Employees • 182  
 Representative • Hirohide Enokiya (President)  
 Head office • Nakanoshima Dai Building F29, 3-3-23 Nakanoshima, kita-ku, Osaka, Japan  
 Website • <https://www.tsusho.co.jp/>

#### Business Fields

• Domestic sales and construction of household - rerated materials such As plywood, lumber, interior and exterior material, household equipments.



### BUTSURIN Co.,Ltd.

Establishment • August 1,1967  
 Capital • 50mYen  
 Sales • 24,197mYen  
 Employees • 134  
 Representative • Katsumi Tannaka (President)  
 Head office • WOOD LAND TOWER F6F7, 1-7-22 Shinkiba, Koto-ku, Tokyo, Japan  
 Website • <https://www.mbr.co.jp/>

#### Business Fields

• Standing trees, logs, lumber and processed wood products. From both Domestic and foreign sources. Sales of various building materials. construction of exterior Products. and garden components. along with special green construction (rooftop,wall) Engineering woks and design. operation and management of construction projects. timber, gardening materials and sales of forestry equipment.



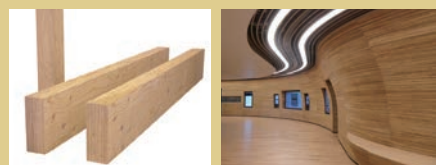
## Plywood manufacturing and Wood processing business (9Corporats)

### KEYTEC Co.,Ltd.

Establishment • April 18,1958  
 Capital • 268.4mYen  
 Sales • 8,704mYen  
 Employees • 173  
 Representative • Hirokazu Nakanishi (President)  
 Head office • WOOD LAND TOWER F8, 1-7-22 Shinkiba, Koto-ku, Tokyo, Japan  
 Website • <http://www.key-tec.co.jp/>

#### Business Fields

• Structual laminated veneer lumber (LVL), manufacturing and sales of various plywood.



### TIMBERAM Co.,Ltd.

Establishment • October 3,1994  
 Capital • 92mYen  
 Sales • 5,383mYen  
 Employees • 159  
 Representative • Tomoaki Kaneko (President)  
 Head office • 141-1 Utsufuke, OokawaOokawa, Gojyoumemachi, Minamiakita-gun, Akita, Japan  
 Website • <https://www.timberam.co.jp/>

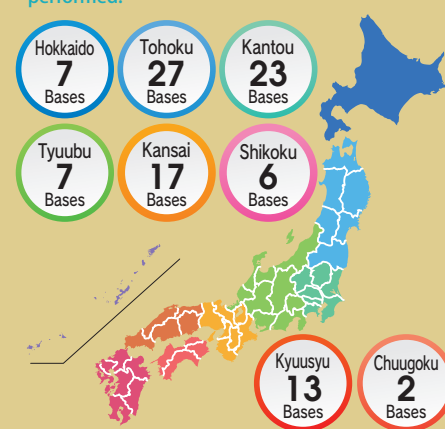
#### Business Fields

• Production and sale of the laminated lumber for the structure. Precutting. The joining hardware installation. A building and design of the hierarchy structure and support. Construction of the wooden building. Construction materials selling.



## Comprehensive retail business (19Corporats)

The one of the JK Holdings group Retail sale business is in 102 bases of whole country. The service which goes on one step destination is performed.



## Others business (17Corporats)

### JK HOME Co.,Ltd

Establishment • October 11,2013  
 Capital • 30mYen  
 Sales • 680mYen  
 Employees • 19  
 Representative • Takashi Momoi (President)  
 Head office • 330-18 Naganumachou, Inage-ku, Chiba-shi, Chiba, Japan  
 Website • <https://www.brucehomebuilders.com/>

#### Business Fields

• Custom-built houses, renovation, management of Bruce home Group Franchise Chain Headquarters.



### TIMBER SCAPE Co.,Ltd

Establishment • March 1,2019  
 Capital • 40mYen  
 Sales • 1,564mYen  
 Employees • 4  
 Representative • Naokazu Kajii (President)  
 Head office • WOOD LAND TOWER F6, 1-7-22 Shinkiba, Koto-ku, Tokyo, Japan  
 Website • <https://www.timberscape.co.jp/>

#### Business Fields

• A design and construction of wooden construction facilities which utilized a forest resource from area. Park management business.



### HOUSE DEPOT JAPAN Co.,Ltd

Establishment • October 2,2000  
 Capital • 300mYen  
 Sales • 382mYen  
 Employees • 22  
 Representative • Yousuke Yamauchi (President)  
 Head office • WOOD LAND TOWER F5, 1-7-22 Shinkiba, Koto-ku, Tokyo, Japan  
 Website • <http://www.housedepot.co.jp/>

#### Business Fields

• Building materials platform, implementation of the Depot Library, offering "House Depot & Renovation" tools, providing the Heart System and financial services





# About Us

<b>Corporate Name</b>	• JK Holdings Co., Ltd.
<b>Head Office</b>	• WOOD LAND TOWER, 1-7-22, Shinkiba, Koto-Ku, Tokyo, Japan
<b>Telephone</b>	• 81-3-5534-3800
<b>Facsimile</b>	• 81-3-5534-3835
<b>Website</b>	• <a href="https://www.jkhd.co.jp">https://www.jkhd.co.jp</a>
<b>Foundation</b>	• October 1937
<b>Establishment</b>	• February 15, 1949
<b>Capital</b>	• 3,195mYen
<b>Sales</b>	• 343,254 mYen
<b>Employees</b>	• 3,201 (The group whole)
<b>Bank of Account</b>	• Mizuho Bank, Ltd. • Sumitomo Mitsui Banking Corporation • The Shoko Chukin Bank, Ltd. • Resona Bank, Ltd. • The Higashi-Nippon Bank, Ltd.

**Settlement**

- on March 31
- Listed on the Tokyo Stock Exchange (code: 9896)

## Board Members

Takashi Yoshida	• Chairman
Keiichiro Aoki	• President
Akinori Ogawa	• Director
Tomoaki Kaneko	• Director
Tatsuo Koyanagi	• Director
Kazuyuki Tatezaki	• Director
Akira Yoshida	• Director
Hideaki Tanaka	• Outside Director
Yutaka Taniuchi	• Outside Director
Kozo Ota	• Auditor
Hirokazu Tabata	• Auditor
Shinichi Kobayashi	• Outside Auditor
Akihiro Matsuda	• Outside Auditor

## History :

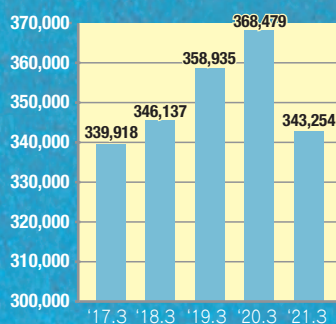
- 1998.10. • Japan Kenzai Co., Ltd. created through merge of Maruyoshi Co., Ltd. and Kokoku Housing Co., Ltd.
- 2003. 3. • The first section of the Tokyo Stock Exchange assigned
- 2004. 3. • The Acquisition of ISO14C • 01 certification
- 2004. 4. • TSUSHO Co., Ltd. (Sales of housing material) becomes a subsidiary
- 2006.10. • Becomes pure holding company, corporate name changes from Japan Kenzai Co., Ltd. to JK Holdings Co., Ltd.
- 2007. 3. • The affiliation of Mitsui & Co. Forestry Ltd., trade name to Butsurin Co., Ltd.
- 2007. 9. • The completion of new headquarters (WOOD LAND TOWER)
- 2007.10. • The Wood & Plywood Museum NPO (Trustee: Shigeru Yoshida) opened.

The museum JK Holdings Co., Ltd. is supporting is the only museum in the world that focusses on the theme of wood and plywood and earth environment.



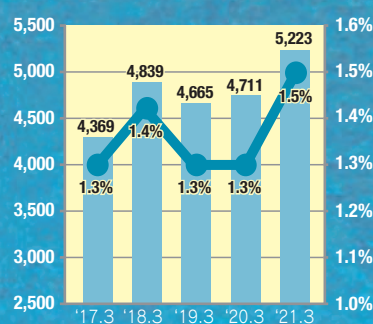
- 2011.10. • MITOMOKU Co., Ltd. (Sales of housing material) becomes a wholly-owned subsidiary.
- 2012.10. • 75th anniversary since foundation.
- 2013. 3. • Meirin Co., Ltd. (Sales of housing material) becomes a subsidiary.
- 2013.10. • Miyamori Co., Ltd. (Lumber Processing) becomes a subsidiary.
- 2016. 4. • TOP-Kenzai Co., Ltd. (Sales of housing material) becomes a subsidiary
- 2016.11. • MJ Tech Co., Ltd. (processing and sales of exterior wall materials for residential use) becomes a subsidiary.
- 2017. 4. • Opening of Moscow Office of JK Holdings Co., Ltd.
- 2017.10. • 80th anniversary of JK Holdings Co., Ltd.

## ● Sales 343,254



(Unit: million yen)

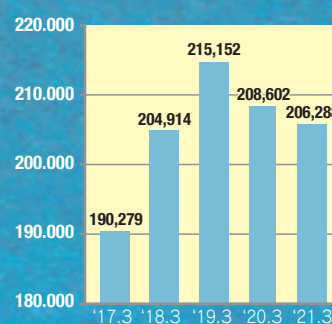
## ● Ordinary income 5,223



(Unit: million yen)

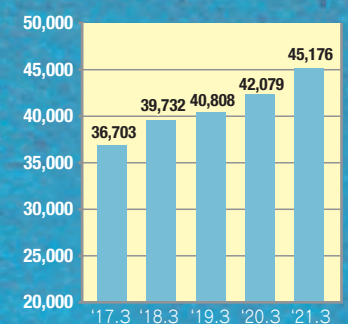
■ Ordinary income  
● Ordinary income rate

## ● Total assets 206,288



(Unit: million yen)

## ● Net assets 45,176



(Unit: million yen)



## Our overseas business network in 2021

The JK Holdings Group has local subsidiaries and representative offices in 13 locations in 7 countries around the world, and Japanese staffs are dispatched to each location.

- |               |                                   |                  |                        |
|---------------|-----------------------------------|------------------|------------------------|
| <b>China</b>  | • Shenyang / Shanghai / Hong Kong | <b>Russia</b>    | • Moscow / Vladivostok |
| <b>Taiwan</b> | • Taipei / Taichung               | <b>Malaysia</b>  | • Miri                 |
| <b>USA</b>    | • New York / Seattle              | <b>Indonesia</b> | • Jakarta              |
|               |                                   | <b>Singapore</b> | • Singapore            |

Connecting Japan with other countries as well as bridging international markets, we procure and supply the best products from the most suitable countries to meet the needs of our customers, including lumber, building materials, and housing equipment, in pursuit of our corporate philosophy of "creating comfortable and affluent living environments."

## Import

We import and sell logs, lumber, and various processed products.

- Daily information exchange and cooperation with expatriates in Europe, the United States, Southeast Asia, and China
- Building connections around the world, including Europe, the United States, Russia, Southeast Asia, and China

## Export

We export domestic building materials products.

- Efforts to promote and provide the good performance and high quality of Japanese products to international markets.

## foreign countries

We make a deal between foreign countries of the woody parts material.

